

# Teramind Deployment Endpoint Requirements



## Teramind Endpoint Requirements

Teramind Endpoint Agent is a lightweight app that can be installed on a typical computer or server without requiring any special hardware. It's responsible for monitoring and enforcing policies and rules on the endpoint. The specifications for the agent are:



### Sessions

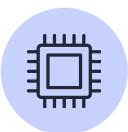
- ✓ Stand-alone workstation/server.
- ✓ Terminal server (RDS)\*.
- ✓ Application / Session server.
- ✓ Citrix.
- ✓ VMware Horizon.

\* Ideally, terminal servers should have a maximum of about 30 users or less depending on the number of screens and monitoring settings. Otherwise, you may have a performance impact.



### Supported Platforms

- ✓ Microsoft Windows 8 and up (64-bit).
- ✓ Microsoft Windows Server 2012 and up.
- ✓ macOS macOS 10.14 (Mojave) and up.



### Load

Approximately 30 MB - 50 MB memory and 1-3% CPU utilization, depending on user activity.



### Visibility

Hidden and revealed desktop agents are available.

## About

Since 2014, over 10,000 organizations around the world have trusted Teramind to provide insider threat management, data loss prevention, and business process engineering through behavioral user data. By

harnessing behavior analytics, our award-winning platform has helped enterprises in finance, retail, manufacturing, energy, technology, healthcare, and government optimize their workforce and protect their businesses.

More details can be found here: [Teramind Agent Specifications](#)

## Request Your Custom Demo Now

Get a demo



### Bandwidth

Approximately 10 KB/s - 20 KB/s upstream depending on the user's activity level and the number of screens.



### Deployment

- ✓ Silent MSI.
- ✓ Deployment via Group Policy or SCCM.
- ✓ Dashboard-based silent remote installer.



### Offline Monitoring

Both the revealed and hidden agents can monitor and enforce policies and rules offline. However, only the hidden agent (Windows) supports offline video recording. In case of network downtime, the hidden agent will save all data locally, and continue to enforce the policies. Once the connection is re-established, the agent will upload the data to the server at a throttled pace. The offline storage buffer is configurable in monitoring settings, and takes approximately 1GB per 160 hours of work time.